

Threshold Effects and Unit Roots of Real Commodity Prices Since the Mid-Nineteenth Century

Pedro Clavijo-Cortes¹

Jacobo Campo-Robledo²

Henry Mendoza-Tolosa³

Abstract

This paper investigates whether real commodity prices for six major primary goods can be characterized by a unit root process and nonlinearities. An unconstrained two-regime threshold autoregressive model is used with an autoregressive unit root. Among the main results, it is found that terms of trade for agricultural, mineral, non-tropical, and non-oil goods, are nonlinear processes that are characterized by a unit root process. Additionally, we found evidence supporting the Prebisch-Singer hypothesis for mineral and tropical goods.

Keywords: Threshold effect, unit root, nonlinearities, commodity prices.

JEL: C22, Q02, O13.

¹ Facultad de Ciencias Económicas y Administrativas, Universidad Católica de Colombia. E-mail: phclavijo@ucatolica.edu.co

² Facultad de Ciencias Económicas y Administrativas, Universidad Católica de Colombia. Email: jacampo@ucatolica.edu.co

³ Facultad de Ciencias Económicas y Administrativas, Universidad Católica de Colombia. E-mail: hamendoza@ucatolica.edu.co

1. Introduction

One of the central preoccupations of the early development economists in Latin America was the understanding of the primary terms of trade long term behavior. In general, for highly commodity-dependent developing countries, it becomes a significant policy concern to understand the underlying dynamic of the terms of trade properly. It is no surprise, then, that a significant number of man-hours have been devoted to empirically analyze the behavior and the trajectory of primary terms of trade over time (see, e.g., Grilli and Yang (1988); Zanas (2005); Bidarkota and Crucini (2000); Ghoshray (2011); Erten (2011); among several others)

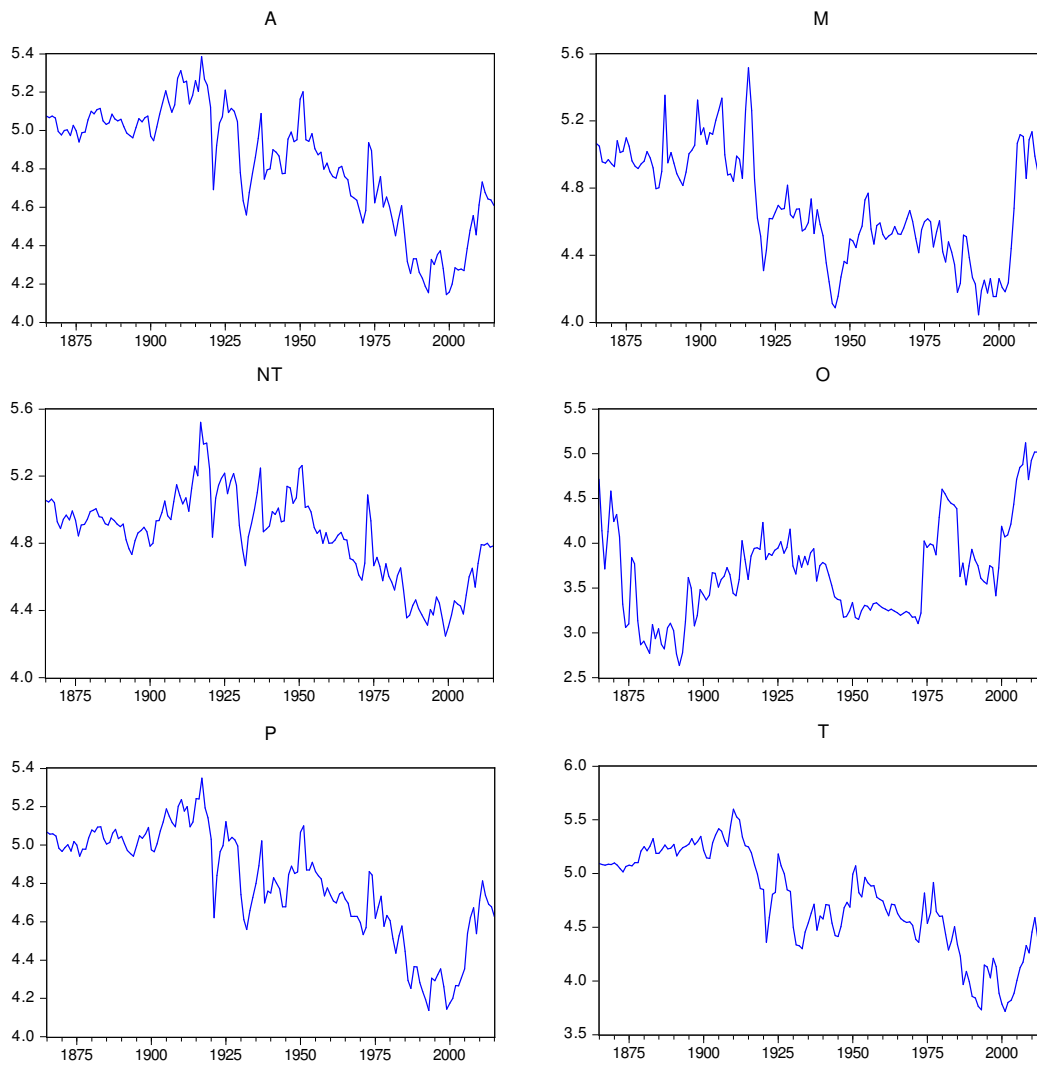
Early studies, however, have focused mainly on studying the well-known Prebisch-Singer hypothesis, which predicts a secular decline in primary terms of trade over the long term. Regardless of whether these studies support or not the Prebisch-Singer hypothesis, the bulk of the existing empirical literature has ignored the possibility that commodity prices may contain threshold effects, assuming that prices were characterized by a linear trend stationary process. Deaton (1999), and Wang and Tomek (2007), for instance, argue that primary terms of trade are better characterized by a stationary process. Hence, prices may deviate in the short run from the long run, but prices will eventually revert to its long-run equilibrium.

The lack of studies on nonlinearities of the terms of trade is intriguing since real prices for major categories of commodities exhibit periodic sharp spikes separated by prolonged slumps, which might presuppose that terms of trade move between a low and a high regime over time. Recently, Erten and Ocampo (2013) have provided evidence of nonlinearities in TOTs. Following the work of Cuddington and Jerrett (2008a, 2008b), Erten and Ocampo present evidence of super cycles and nonlinear trends that drives the behavior of TOTs in the long run. They use a band-pass filter approach to decompose the series of six aggregate real primary prices and find four super cycles during 1865 – 2010. Moreover, a couple of significant findings of their study are that super cycles are demand-driven and that the mean of each super cycle tends to be lower than that of the previous cycle. Thus, they find a stepwise deterioration over the period in support of the Prebisch-Singer hypothesis contradicting, thus, Thirlwall and Bergevin (1985).

Despite the abundance of studies on the behaviors of TOTs' trends over time, nonlinearity has not been exploited to the fullest yet in the modeling of such essential variables. For instance, the study of Erten and Ocampo cannot tell us whether the upswings and downturns correspond to high or low regimes, respectively. More recently, Geronimi and Taranco (2018) address this gap in the literature by employing a Markov regime-switching (MRS) model to determine how terms of trade for primary commodities have switched among regimes. The study reveals that there are three regimes over the 1900 – 2016 period, with the second regime (2005-) associated with a level of prices significantly higher. They suggest that developing countries should follow those price signals to specialize in primary goods. Geronimi and Taranco did not, however, formally test for nonstationarity, a potentially important component of any formal assessment of the Prebisch-Singer hypothesis.

Motivated by these considerations, this document evaluates for the presence of nonlinearities and unit root in the terms of trade (TOTs) of agricultural (A), mineral (M), tropical (T), non-tropical (NT), oil (O), and non-oil (P) goods over the time period 1865 – 2015. Figure 1 shows the trajectory of these annual series over the period 1865 – 2015.

Figure 1. Logarithm of TOTs, 1865 – 2015.



Source: United Nations and World Bank.

Several nonlinear modeling techniques have been suggested in the literature to capture nonlinearities in time series. In this document, in particular, we use the Threshold Autoregressive (TAR) model, which has not been employed before to address these issues related to nonlinearity and nonstationarity in terms of trade. The TAR model

differs from conventional linear econometric models by their assumption of the existence of different segments or regimes, within which the time series may exhibit different behavior such as stationarity or lack of it. Likewise, TAR model differs from other nonlinear models such as MRS models, not only by its simplicity but also because they produce reliable results. Moreover, one disadvantage of MRS is that regimes are unobservable, and in the case of TAR models, it is possible to describe the conditions that separate the regimes.

TAR was introduced by Tong (1978) to model regime switching in time series, and further developments were done by Tong and Lim (1980) and Tong (1983, 1995). TAR model features asymmetric cycles and jump phenomena between two or more branches governed by a threshold variable. This study relies upon the Caner and Hansen (2001) extension of a two-regime TAR model with an autoregressive unit root. Caner and Hansen loosen the assumption that series is stationary, ergodic, and has no unit root. This allows discriminating nonstationarity from nonlinearity. Their contribution is that they provide a rigorous econometric framework that allows for both effects simultaneously.

The rest of the document is organized as follows: Section 2 presents the methodology of Caner and Hansen to cope with nonstationarity and nonlinearity simultaneously, section 3 shows data and results from Caner and Hansen methodology, and section 4 concludes.

2. Methodology

This section borrows heavily on the work of Caner and Hansen (2001), who consider a two-regime TAR(k) model with an autoregressive unit root:

$$\Delta TOT_t^j = \theta_1' x_{t-1} \mathbf{1}_{\{Z_{t-1} < \lambda\}} + \theta_2' x_{t-1} \mathbf{1}_{\{Z_{t-1} \geq \lambda\}} + \varepsilon_t \quad (1)$$

where, $x_{t-1} = (TOT_{t-1}^j r_t' \Delta TOT_{t-1}^j \cdots \Delta TOT_{t-k}^j)'$, $\mathbf{1}_{\{\cdot\}}$ is the indicator function, ε_t is an iid error, $Z_{t-1}^j = TOT_{t-1}^j - TOT_{t-m-1}^j$ for some $m \geq 1$ is the value of the threshold variable,

r_t is a vector of deterministic components that includes an intercept and a linear time trend, $j = A, M, T, NT, O, P$, and λ is a threshold parameter, which takes values in the interval $\lambda \in \Lambda = [\lambda_1, \lambda_2]$, where λ_1, λ_2 are chosen such that $P(Z_t^j \leq \lambda_1) = \pi_1 > 0$ and $P(Z_t^j \leq \lambda_2) = \pi_2 < 1$. The components of θ_1' and θ_2' can be partitioned as follows:

$$\theta_1 = \begin{pmatrix} \rho_1 \\ \beta_1 \\ \alpha_1 \end{pmatrix}, \quad \theta_2 = \begin{pmatrix} \rho_2 \\ \beta_2 \\ \alpha_2 \end{pmatrix}$$

where ρ_1 and ρ_2 are scalar, β_1 and β_2 have the same dimension as r_t , and α_1 and α_2 are k-vectors. Thus (ρ_1, ρ_2) are the slope coefficients on TOT_{t-1}^j , (β_1, β_2) are the slopes on the deterministic components, and (α_1, α_2) are the slope coefficients on $(\Delta TOT_{t-1}^j, \dots, \Delta TOT_{t-k}^j)$ in the two regimes. When estimating equation “(1)”, for each $\lambda \in \Lambda$, θ_1 and θ_2 are estimated by least squares. The least square estimate of the threshold λ and of the corresponding vectors θ_1 and θ_2 are those that minimize the residual sum of squares. Additionally, Caner and Hansen (2001) suggest that setting the bounds of the trimming region to $\pi_1 = 0.15$ and $\pi_2 = 0.85$ provides a reasonable trade-off between the power and size properties of the test for threshold effects.

Using equation “(1)”, we want to test two things: threshold effect and stationarity property. The threshold effect is based on the null hypothesis $H_0: \theta_1 = \theta_2$, which is tested using the Wald statistic: $W_T = W_T(\hat{\lambda}) = \sup_{\lambda \in \Lambda} W_T(\lambda)$. Caner and Hansen (2001) find that under the restriction of a unit root process, the asymptotic distribution of W_T depends on the data structure, which implies that critical values cannot be tabulated, and therefore the authors suggest two bootstrap methods to approximate the asymptotic distribution of W_T . On the other hand, the stationarity of the process TOT_t^j can be established in two ways. First, when there is a unit root in both regimes. Here, the null hypothesis is of the form $H_0: \rho_1 = \rho_2 = 0$. Second, when there is a unit root in only one of the regimes, a case of partial unit root, the alternative hypothesis is of the form:

$$H_2: \begin{cases} \rho_1 < 0 \text{ and } \rho_2 = 0 \\ \text{or} \\ \rho_1 = 0 \text{ and } \rho_2 < 0 \end{cases}$$

The null hypothesis is tested against the unrestricted alternative $\rho_1 \neq 0$ or $\rho_2 \neq 0$ using the Wald statistic: $R_{2T} = t_1^2 + t_2^2$. Here, t_1 and t_2 are the t ratios for $\hat{\rho}_1$ and $\hat{\rho}_2$ from the OLS estimation. However, Caner and Hansen (2001) claim that this two-sided Wald statistic may have less power than a one-sided version of the test. As a result, they propose the following one-sided Wald statistic:

$$R_{1T} = t_1^2 \mathbf{1}_{\{\hat{\rho}_1 < 0\}} + t_2^2 \mathbf{1}_{\{\hat{\rho}_2 < 0\}}$$

To distinguish between the stationary case given as H_1 and the partial unit root case given as H_2 , Caner and Hansen (2001) suggest using individual t statistics t_1 and t_2 . If only one of $-t_1$ and $-t_2$ is statistically significant, this will be consistent with the partial unit root case H_2 . To obtain maximum power from these tests, Caner and Hansen (2001) suggest that relevant critical values should be computed using Bootstrap methods. Thus, R_{1T} and R_{2T} allow us to test whether the series is stationary while t_1 and t_2 allow us to identify which of the regimes is stationary.

3. Data and results of the estimation

The empirical analysis is based on annual data for the natural logarithm of the terms of trade of agricultural, mineral, tropical, non-tropical, oil, and non-oil goods. We develop our econometric estimations using the same observations for the period 1865 – 2015. The data is an extension of that used by Erten and Ocampo (2013) who for the non-oil commodity prices, use annual data composed of prices for 24 commodities up to 1961 and 32 since 1962, grouped into five indices: total, metals, total agriculture, tropical agriculture, and non-tropical (or temperate zone) agriculture. As for oil prices, Erten and Ocampo base their calculations on spliced series of West Texas International using data from the World Economic Outlook and the Global Financial Data. Real price indices are computed based on Lewis' series for world manufacturing prices for the earlier part of the sample and the Manufacturing Unit Value index developed by the United Nations and updated by the World Bank for the later part.

The nonlinearity and unit root tests are applied to the natural logarithm of each real commodity price index. Consequently, the transition variable (Z_t^j) has a direct interpretation as the 'TOTs' growth rate. This treatment of the transition variable introduces a dynamic threshold, which is not often seen in empirical investigations on nonlinearities. We employ the econometric apparatus presented in section 2 to ask if there is any statistical evidence to reject the linear AR model in favor of a threshold model. As explained in section 2, the Wald test WT can be used to examine whether we can reject the linear autoregressive model in favor of a threshold model. We begin with a linear AR(5) model for all six series, which was mostly the best model according to a sequential t-test. For some series, the t-test selected a different lag order, although the alternative model presented serial autocorrelation in the error term. The AR(5) guarantees no serial autocorrelation and the right balance between the sample size and lags order to capture nonlinearities.

The results of the Wald test are reported in Table I. We also report the bootstrap critical values generated at conventional levels of significance and bootstrap p-values for threshold variables of the form Z_t^j for delay parameters m from 1 to 5. Bootstrap critical values and bootstrap p-values were computed based on 10,000 replications.

Table I. Nonlinearities tests.

TOT	m	W_T	10% Critical Value	5% Critical Value	Bootstrap p-value	Threshold Estimate
A	1	23.8	21.96	24.89	0.065	-0.07
NT	5	17.95	22.38	25.43	0.257	0.14
O	5	20.6	21.8	24.6	0.139	0.18
P	1	24.3	22.1	25.0	0.059	-0.07
T	4	25.4	21.9	24.8	0.043	0.22
M	5	42.70	22.14	24.89	0.000	0.21

Table 1 merely reports values for m , which maximize the Wald test statistic for each series. As can be noted, the statistic is significant for A, P, T, and M, and therefore, we reject the null hypothesis of linearity in favor of the threshold model at the 5% and 10% level of significance. For NT and O the statistic is highly insignificant. Hence, there is strong evidence for threshold effects, and therefore, nonlinearities for A, P, T, and M. Table I also reports the threshold estimate. Thus, in the case of M, if the change in the log terms of trade, that is, the growth rate of the terms of trade, rises above 0.21 in the past five years, M switches to the second regime. The first regime is when $Z_t^M < 0.21$, which occurs when terms of trade are growing at a slower rate over a five-years period.

On the question of whether there is a tendency for primary prices to decline, as the Prebisch-Singer hypothesis suggests, we may use the dynamic the transition variable introduces into the model to contribute to this debate. There are several approaches to present the Prebisch-Singer hypothesis. For instance, here we use the threshold estimate and the number of observations that lies within each regime to test the hypothesis (for those series that exhibit nonlinearity). Approximately 15% and 85% of observations of A, 86% and 14% of M, 15% and 85% of P, and 82% and 18% of T fall in regime 1 and 2 respectively. The distribution of observation among regimes suggests that regime 1 is dominant in M and T, and regime 2 is dominant in A and P. Hence, the dominance of regime 1 for M and T might imply that over the sample, those terms of trade have been deteriorating since have been growing at a slower rate growth of that determined by the threshold.

Next, by using the unit root tests described in section 2, we analyze the behavior of these two regimes exclusively in those TOTs that exhibits nonlinearities. We have found evidence that terms of trade of agricultural, mineral, tropical, and non-oil goods are nonlinear processes. In what follows, we explore the unit root properties of these four terms of trade. As explained above, to investigate the unit root properties, we calculate the threshold unit root test statistics R_{1T} , R_{2T} , t_1 , and t_2 for each delay parameter m , ranging from 1 to 5. However, the bootstrap critical and p values correspond to the m that is calculated in Table I. We begin by examining the R_{1T} and

R_{2T} tests results, which, together with the bootstrap critical values at the conventional levels of significance and the bootstrap p-values, are reported in Table II. For instance, in the case of M when $m=5$, the W_T statistic obtained from the R_{1T} and R_{2T} tests are smaller than the bootstrap critical value at the 10% and 5% levels of significance. As a result, the null hypothesis of a unit root for M cannot be rejected. In general, the null of a unit root cannot be rejected for any series, implying that TOTs are nonstationary processes.

Table II. R_{1T} and R_{2T} unit root tests.

TOT	m	R_{1T}				R_{2T}			
		W_T	Bootstrap critical and p values			W_T	Bootstrap critical and p values		
			10%	5%	p-value		10%	5%	p-value
A	1	5.6	13.29	15.92	0.57	5.67	13.58	16.16	0.58
P	1	6.23	13.27	16.1	0.52	6.23	13.54	16.39	0.54
T	4	8.59	14.22	17.17	0.36	8.59	14.5	17.35	0.37
M	5	4.98	14.36	17.28	0.67	4.98	14.54	17.47	0.69

We examine further evidence on the unit root hypothesis by examining the individual t statistics, t_1 and t_2 . The results are reported in Table III. The t_1 test statistic is smaller than the bootstrap critical values for all series at 10% and 5% levels of significance. Likewise, t_2 is smaller than the bootstrap critical values at the same significance levels. This leads us to the conclusion that the unit root null cannot be rejected.

Table III. t_1 and t_2 unit root tests.

		t_1				t_2			
		Bootstrap critical and p values				Bootstrap critical and p values			
TOT	m	t-stat	10%	5%	p-value	t-stat	10%	5%	p-value
A	1	-0.26	2.98	3.37	0.91	2.367	3.017	3.4368	0.2419
P	1	-0.026	2.978	3.359	0.875	2.495	3.056	3.4492	0.2198
T	4	2.46	3.11	3.52	0.24	1.597	3.095	3.4968	0.5014
M	5	2.02	3.07	3.46	0.36	0.941	3.139	3.5453	0.7104

4. Final remarks

Motivated by the possibility that terms of trade of commodities may be characterized by a nonlinear data generating process, we test for nonlinearities for six major commodities prices. We aimed to extend the analysis further by testing the presence of a unit root to contrast some theories that state commodities prices should be stationary. Thus, in this document, we use an asymptotic theory of inference for a two-regime TAR model with an autoregressive unit root developed by Caner and Hansen. The main finding is that terms of trade for agricultural, mineral, non-tropical, and non-oil goods, are nonlinear and nonstationary. Nonlinearity justifies the use of nonlinear techniques (such as TAR models) to characterize terms of trade in future research on the matter. Likewise, future research should employ nonlinear unit root test, since the typical test assumes that the data generating process is linear. Nonstationarity implies that these series are a difference stationary process. Finally, we also found evidence supporting the Prebisch-Singer hypothesis for mineral and tropical goods.

References

- Bidarkota, Prasad and Crucini, Mario J. (2000) “Commodity Prices and the Terms of Trade” *Review of International Economics* **8**, 647-666
- Caner, Mehmet and Hansen, Bruce. (2001) “Threshold autoregression with a unit root” *Econometrica* **69(6)**, 1555-1596
- Cuddington, J. T. and Jerrett, D. (2008a) “Super-cycles in real metal prices?” *IMF Staff Papers* **55(4)**, 541-565
- Cuddington, J. T. and Jerrett, D. (2008b) “Broadening the statistical search for metal price super cycles to steels and related metals” *Resources Policy* **33(4)**.
- Deaton, A. (1999) “Commodity Prices and Growth in Africa” *Journal of Economic Perspectives* **13**, 23-40
- Erten, Bilge (2011) “North-South terms-of-trade trends from 1960 to 2006” *International Review of Applied Economics* **25**, 171-184
- Erten, Bilge and Ocampo, Jose A. (2013) “Super Cycles of Commodity Prices Since the Mid-Nineteenth Century” *World Development* **44**, 14-30
- Geronimi, Vincent and Taranco, Armand (2018) “Revisiting the Prebisch-Singer hypothesis of a secular decline in the terms of trade of primary commodities (1900–2016). A dynamic regime approach” *Resources Policy* **59**, 329-339
- Ghoshray, Atanu (2011) “A reexamination of trends in primary commodity prices” *Journal of Development Economics* **95**, 242-251
- Grilli, Enzo R. and Yang, Maw Cheng (1988) “Primary Commodity Prices, Manufactured Goods Prices, and the Terms of Trade of Developing Countries: What the Long Run Shows” *The World Bank Economic Review* **2**, 1-47

- Thirlwall, A.P. and Bergevin, J. (1985) "Trends, Cycles, and Asymmetries in the Terms of Trade of Primary Commodities from Developed and Less Developed Countries" *World Development* **13**, 805-817
- Tong, Howell (1978) "On a Threshold Model" in *Pattern Recognition and Signal Processing* by C. H. Chen, Ed., Amsterdam: Sijhoff & Noordhoff
- Tong, Howell (1983) *Threshold Models in Nonlinear Time Series Analysis* (Lecture Notes in Statistics No. 21), New York: Springer-Verlag.
- Tong, Howell (1995) "A personal overview of non-linear time series analysis from a chaos perspective" *Scandinavian Journal of Statistics* **22**, 399-445
- Tong, H. and Lim, K. S. (1980) "Threshold Autoregression, Limit Cycles and Cyclical Data" (with discussion) *Journal of the Royal Statistical Society* **42**, 245-292.
- Wang, D. and Tomek, W. G. (2007) "Commodity Prices and Unit Root Tests" *American Journal of Agricultural Economics* **89**, 873-689
- Zanias, George P. (2005) "Testing for trends in the terms of trade between primary commodities and manufactured goods" *Journal of Development Economics* **78**, 49-59